



Animal Mazes for Video-Tracking

FOR STUDIES OF:

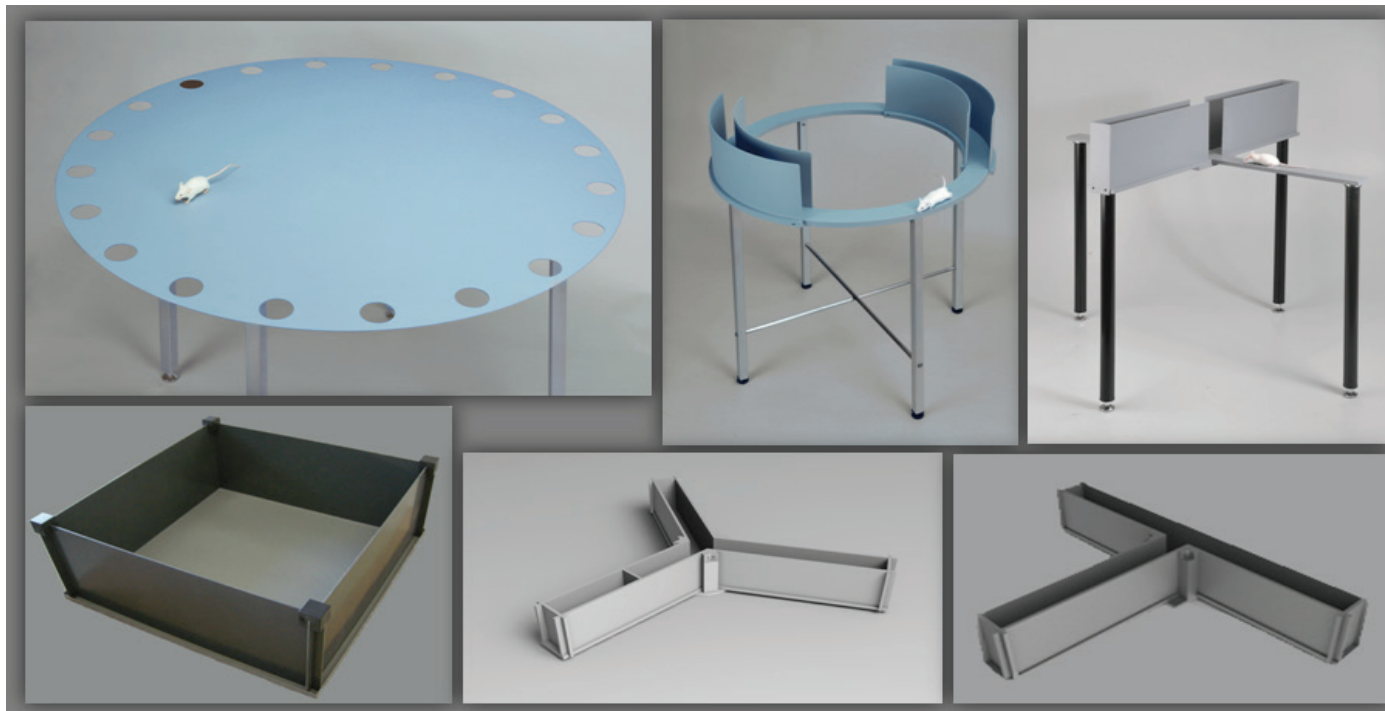
- Anxiety and Stress
- Memory and Learning
- Spatial Memory
- Activity and Exploration

General

The Animal Mazes manufactured by Ugo Basile are designed to give optimal results with any Video-Tracking software. This is achieved by:

- *high-contrast colors*: grey, white, black or the NEW Ugo Basile Light-Blue
- *non-reflective colors*: reflections are a common source of error in animal tracking. Let's avoid them!

All maze materials were selected to be *sturdy and easy to clean*, to construct reliable and durable mazes.



Main Features

- High-contrast, non-reflective colors optimized for Video-Tracking
- Quality materials: light, easy to clean and to store
- Surface texture selected for best rodent's comfort (reasonable rough, "warm" surface)

Water Maze Pool

The Ugo Basile Water Mazes are water pools specifically manufactured for Morris Water Maze experiments (i.e., not a cattle drinking trough) and include:

- wheels and drain hose
 - built-in connectors for Hydraulic Atlantis Platforms (not included)
 - customizable colors and dimension on request
 - animal platform (fixed height, 10 or 12 cm diameter)
- Pools are 60 cm high and 120, 150 or 180 cm diameter.



Barnes Maze

- Mouse version: 100 cm diameter, 5 cm hole diameter
- Rat version: 130 cm diameter, 10 cm hole diameter



Both versions are 60 cm high and are painted in non-reflective grey or light-blue (white, black or other custom colors are available on request). The animal shelter is included and is magnetically attached to the maze, for quick and easy experiments.

Elevated Plus-Maze and Zero-Maze



Elevated Plus-Maze



Zero - Maze

These mazes are manufactured from high-tech metal alloy and can be painted in different colors. Dimension (cm):

- Elevated Plus-Maze, Mouse: arm length 35, arm width 5, closed wall height 15, height from the floor 60
- Elevated Plus-Maze, Rat: arm length 50, arm width 10, closed wall height 40, height from the floor 60
- Zero-Maze, Mouse: diameter 55, corridor width 5, wall

height 15, height from the floor 60 cm

Y-maze, T-maze

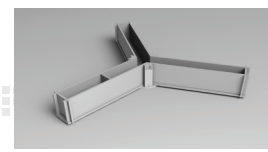
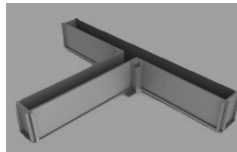
These mazes have a metal base painted in non-reflective grey (more colors on request) and plastic arms that can be disassembled and closed with the included doors. Dimension (cm):

Y-maze, Mouse: arms length 35, width 5, wall height 15

Y-maze, Rat: arms length 50, width 10, wall height 20

T-maze, Mouse: stem length 35, arm length 30, width 5, wall height 15

T-maze, Rat: stem length 50, arm length 40, width 10, wall height 20



Open-Field

Open Fields are available in non-reflective grey color, for mice (44 cm) or for rats (100 cm); both versions have detachable walls for ease of storage.

NEW Mouse Radial Maze

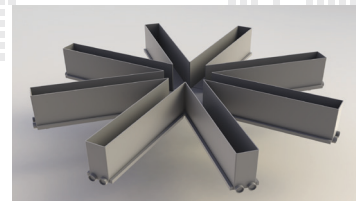
The new Mouse Radial Maze is manufactured from high-tech metal alloy and durable plastics to be as sturdy as possible.

A new automated model, with retractable doors is also available.

Different colors are available, all non-reflective, and arms can be detached, for easy cleaning.

Dimension (cm):

arms length 35, width 5, wall height 10



Ordering Information

- 40125 Water Maze, 120 cm, for mice
- 40155 Water Maze, 150 cm, for mice and rats
- 40185 Water Maze, 180 cm, for rats
- 40193 Barnes Maze, for mice
- 40192 Barnes Maze, for rats
- 40142 Elevated Plus-Maze, for rats
- 40143 Elevated Plus-Maze, for mice
- 40163 Elevated Zero-Maze, for mice
- 40173 Y-maze, for mice
- 40172 Y-maze, for rats
- 40133 T-maze, for mice
- 40132 T-maze, for rats
- 47432 Open-field, 44 cm, dark walls
- 47433 Open-field, 44 cm, transparent walls
- 47100 Open-field, 100 cm, dark walls
- 47150 Open-field, 100 cm, with 4 partitions